

# PRODUCE TO PEOPLE 2015 CALENDAR

## ALLEGHENY COUNTY SITES

	JUL	AUG	SEPT	OCT	NOV	DEC	Location
<b>Sheraden</b>	<b>2</b>	<b>6</b>	<b>3</b>	<b>1</b>	<b>5</b>	<b>3</b>	Langley K-8 School - Cafeteria ◇ 2940 Sheraden Blvd, Pittsburgh 15204 5:30p-7p
<b>Braddock</b>	<b>11</b>	<b>1</b>	<b>5</b>	<b>3</b>	<b>OCT. 31</b>	<b>5</b>	VFD # 2 Social Hall 845 Talbot Ave 10:00a-12:00p
<b>Homewood</b>	<b>11</b>	<b>8</b>	<b>12</b>	<b>10</b>	<b>7</b>	<b>5</b>	Homewood-Brushton YMCA 7140 Bennett Street, Pittsburgh, PA 10:00a-12:00p
<b>Allegheny Valley</b>	<b>14</b> OLMBS	<b>11</b> OLMBS	<b>8</b> OLMBS	<b>13</b> OLMBS	<b>10</b> VN-D	<b>8</b> VN-D	Our Lady of the Most Blessed Sacrament (Apr-Oct) 1526 Union Ave, Natrona Heights 5:30p-7:00p
<b>Duquesne</b>	<b>9</b>	<b>13</b>	<b>10</b>	<b>8</b>	<b>12</b>	<b>10</b>	Food Bank Warehouse (RIDC Park) 1 N Linden St 5:30p-7:00p
<b>McKeesport</b>	<b>18</b>	<b>15</b>	<b>19</b>	<b>17</b>	<b>14</b>	<b>19</b>	Founders' Hall Middle School - Cafeteria 1960 Eden Park Boulevard 10:00a-12:00p
<b>North Side</b>	<b>18</b>	<b>8</b>	<b>19</b>	<b>17</b>	<b>14</b>	<b>12</b>	Pittsburgh King School 50 Montgomery Pl 15212 10:00a-12:00p
<b>South Side</b>	<b>25</b> UPMC	<b>22</b> UPMC	<b>26</b> UPMC	<b>24</b> MH	<b>21</b> MH	<b>19</b> MH	UMPC South Side Outpatient Center (Jul-Sept) 20th and Mary 10:00a-12:00p

## REGIONAL SITES

	JUL	AUG	SEPT	OCT	NOV	DEC	Location
<b>Johnstown</b>	<b>1</b>	<b>5</b>	<b>2</b>	<b>7</b>	<b>4</b>	<b>2</b>	Greater Johnstown Career & Tech Center 445 Schoolhouse Road, Johnstown 10:00a -12:00p
<b>Washington</b>	<b>7</b>	<b>4</b>	<b>1</b>	<b>6</b>	<b>3</b>	<b>8</b>	Washington County Fairgrounds 2151 N. Main St. Washington, PA 15301 10:00a - 12:00p
<b>Alliquippa</b>	<b>17</b>	<b>21</b>	<b>18</b>	<b>16</b>	<b>20</b>	<b>18</b>	Church in the Round, Griffith Street & Woodrow, Aliquippa, PA 15001 10:00a – 12:00p
<b>Beaver Falls</b>	<b>25</b>	<b>22</b>	<b>26</b>	<b>24</b>	<b>21</b>	<b>19</b>	Beaver Falls Middle School, 1601 8th Avenue, Beaver Falls, PA 15010 10:00a – 12:00p
<b>Butler</b>	<b>28</b>	<b>25</b>	<b>22</b>	<b>27</b>	<b>17</b>	<b>15</b>	Butler City Farmers' Market, 205 S. Chestnut St. Butler, PA 16001 4:30p-6:00p
<b>Greene</b>	<b>23</b>	<b>27</b>	<b>24</b>	<b>22</b>	<b>19</b>	<b>17</b>	Greene County Fairgrounds, Waynesburg, PA, 15370 10:00a – 12:00p
<b>New Castle</b>	<b>11</b>	<b>15</b>	<b>12</b>	<b>10</b>	<b>7</b>	<b>12</b>	St Vitus School, 915 South Jefferson Street, New Castle, PA 16101 11:00a-12:30p
<b>Fayette</b>	<b>9</b>	<b>13</b>	<b>10</b>	<b>8</b>	<b>12</b>	<b>10</b>	Fayette County Fairgrounds, Grange Building (left from Main Entrance). 123 Pechin Road, Dunbar PA 15431. 10:00a-12:00p
<b>West Greene</b>	<b>10</b>	<b>14</b>	<b>11</b>	<b>9</b>	<b>13</b>	<b>11</b>	Route 21 West at Route 410 (Harvey's Grange) 10:00a-12:00p

Dates Marked with \*: See location information, below

Note dates in grey squares –not typical day of month

\*Nov-Apr Allegheny Valley at Valley News Dispatch, 210 E 4th Ave Tarentum, PA

\*Oct-Mar South Side at the South Side Market House, Bedford Square (12th and Bingham)

Find us online at [tinyurl.com/p2ppgh](http://tinyurl.com/p2ppgh) or [www.pittsburghfoodbank.org](http://www.pittsburghfoodbank.org)

For information on produce distributions in Somerset County, see [www.scmfb.org](http://www.scmfb.org) or call 814.443.6573 Ext. 3



# EVERYDAY PEOPLE NEED FOOD EVERY DAY



## PRODUCE TO PEOPLE IS IN 17 LOCATIONS!



### What is Produce to People?

**Produce to People** is a free food distribution coordinated by the **Greater Pittsburgh Community Food Bank**. We focus on fresh produce and other whole ingredients, but many other items are distributed, based on availability.

### Where is the distribution?

See reverse for the full list of locations and dates. Each site is served once per month.



### Total Household Income:

Size	Annual	Monthly
1	\$17,505	\$1458
2	\$23,595	\$1966
3	\$29,685	\$2473
4	\$35,775	\$2981

### Per Additional Person:

Add \$6,090 per year

### Who qualifies for assistance?

That's easy! Any Pennsylvania household qualifies if they:

- **Earn** Income within **150%** of the Poverty Line
- **Receive** Medicare, Social Security, Unemployment, Free or Reduced Price School Lunches, etc.
- **Have** A temporary emergency condition (fire, loss of power, etc)

Be sure to bring bags, boxes, or a rolling cart, as you will be walking away with 35-45lbs of food.

### How do I register?

You do not need to bring any proof of income, documentation or identification to receive food. Registration takes place at the distribution.

GREATER PITTSBURGH  
community  
food bank  
A member of Feeding America™



For more information call  
**412-460-3663 x 727**  
Or check out our website at  
**[www.pittsburghfoodbank.org](http://www.pittsburghfoodbank.org)**



## Meals for the Elderly

**LSS/Meals on Wheels:** Meals on Wheels delivers meals to people who are homebound. For information contact Meals on Wheels at 724-774-5654.

**Office on Aging :** Home delivered meals are available to homebound individuals 60 years and older who are unable to prepare their own meals due to health reasons. For more information, please contact the Office on Aging at 724-847-2262.

**Beaver County Senior Centers:** Providing lunch time meals to individuals 60 years and older at no charge.

**Circle of Friends, Aliquippa** 724-857-9989

St. Titus Church Social Hall

107 Sycamore Street, Aliquippa PA

Tues., Wed. & Thurs only

**Circle of Friends, Baden** 724-869-4224

St. John's Baptist School

363 Wayne Street, Baden PA

**Circle of Friends, College Hill** 724-846-1959

St. Philomena Community Hall

3908 Sixth Avenue, Beaver Falls PA

**Circle of Friends, Midland** 724-869-4224

Midland Borough Building

936 Midland Avenue, Midland PA

Tues., Wed. & Thurs. only

**Center at the Mall** 724-728-1422

Beaver Valley Mall

284 Mall Boulevard, Monaca PA

## Produce to People

Produce and other groceries distributed monthly:

**Beaver Fall Middle School**

1601 8th Ave., Beaver Falls

10:00am-12:00pm, the 4th Saturday of the month

And

**Church in the Round**

Griffith Street & Woodrow, Aliquippa

10:am-12:00pm, the 3rd Friday of the Month

For More Information Contact: Salvation Army 724-846-2330

No pre-registration required. Please bring basket or box  
Must meet self-declared income guidelines.

## Additional Resources

**American Red Cross** 724-775-9700

Beaver-Lawrence Chapter  
133 Friendship Circle, Beaver

**Beaver County Collaborative Action Network (CAN)**

Online resource directory at [www.bccan.org](http://www.bccan.org)

724-775-6001

**Beaver County Worker Resource and Advocacy Project** - Resource for unemployment benefits

724-417-1579

**Catholic Charities**

276 East End Avenue, Beaver PA 15009

**The Commodity Supplemental Food Program**

Beaver Falls Salvation Army

Greater Pittsburgh Community Food Bank

1027 Beaver Road, Ambridge

**United Way of Beaver County**

3582 Brodhead Road, Suite 205, Monaca

**Veteran Affairs of Beaver County**

**Women's Center of Beaver County**

724-846-2330  
412-460-3663 x655

724-624-0192

724-774-3210

724-770-4450

724-775-0131

## Women, Infants and Children (WIC)

**What is it?** WIC provides nutritious foods and services for eligible women who are pregnant, breastfeeding, or recently had a baby; infants; and children under 5. Go to [www.pa.wic.com](http://www.pa.wic.com) for income guidelines or call 1-800-WIC-WINS. WIC is an equal opportunity provider.

**What foods are provided?** Fruits, veggies, whole grains, jarred infant foods, and dairy alternatives (soy milk, tofu and cheese) are now offered in addition to milk, eggs, peanut butter, cereal, juice, infant formula, and beans.

**How can WIC help?** WIC can help you stretch your food dollars! If you have 2 kids on WIC, you could save about \$140 on your monthly grocery bill by using your WIC checks. In addition, you will get information on nutrition and how your kids are growing!

**How can I find out more?** Call Adagio Health at 1-866-942-2778 for more information. The WIC office is located at 1317 Seventh Avenue in Beaver Falls. Satellite offices are located in Aliquippa, Ambridge, Freedom and Midland.

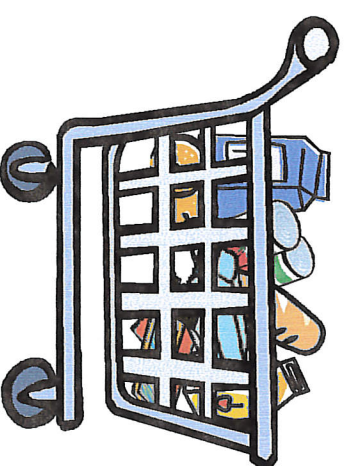
## Information Provided By:



Revised 11-26-14

## BEAVER COUNTY

When you need  
food...



...there's help for your  
family.

### FOR FOOD ASSISTANCE INFORMATION:

**The Salvation Army - Beaver Falls**

724-846-2330

M-F 9:00 am-4:00 pm

### FOR INFORMATION ON FOOD STAMPS (SNAP):

**Beaver County Assistance Office**

724-773-7300

M-F 8:00 am-4:30 pm

or visit

[www.compass.state.pa.us](http://www.compass.state.pa.us)

### FOR EMERGENCY FOOD ASSISTANCE:

Contact Beaver Valley

724-728-3650



# FOOD ASSISTANCE IN BEAVER COUNTY

## SNAP (Formerly Food Stamps)

**What is it?** SNAP (the Supplemental Nutrition Assistance Program—formerly Food Stamps) is the nation's first line of defense against hunger and under-nutrition. SNAP is the cornerstone of all federal nutrition assistance programs, providing benefits for the purchase of nutritious food to qualified low-income people in addition to economic benefits for the local community.

**What does it provide?** Participants receive monthly benefits via an electronic debit card, known as the Electronic Benefits Transfer (EBT) card, that can be used to buy food at any store that accepts food stamps.

**Do I qualify?** Eligibility is based on income and resources available to the household. You may receive SNAP benefits even if you do not receive cash assistance. SNAP benefits are not welfare.

**How can I find out more?** Call the Beaver County Assistance Office at 724-773-7300 or visit the Compass site at [www.compass.state.pa.us](http://www.compass.state.pa.us) to sign up.

## The School Lunch and Breakfast Programs

**What are they?** The School Lunch and School Breakfast Programs are federal programs that provide nutritious meals to children as a regular part of their school day.

**Do I qualify?** Meals are free if your income is under 130% poverty or a reduced-price if you are under 185% of poverty. Parents must submit an application form to receive reduced price or free meals.

**How can I find out more?** Call your child's school, go to [www.compass.state.pa.us](http://www.compass.state.pa.us) or call PA Department of Education at 1-800-331-0129.

## Summer Feeding Program

The Summer Feeding Program provides free meals for school children during the summer months. For more information, call Greater Pittsburgh Community Food Bank: 412-460-3663 ext. 409.

## Soup Kitchens

Soup Kitchens are open to the public and provide prepared meals at their sites to people in need.

**Agape Mobile Soup Kitchen—Sound the Alarm Ministries**  
This soup kitchen is a mobile unit. Call 724-375-2008 for location.

**Serves** Fridays 5:00-6:00 p.m.

**Central United Methodist Church**

6th Avenue and 13th Street, Beaver Falls

**Serves** Fridays 5:00-6:00 p.m.

**Lunch every Tues. Sept.–May** 11:30 a.m.-1:00 p.m.

**Christ Episcopal Church** 724-847-3760

1217 3rd Ave, New Brighton **Serves** Weds., Thurs 11:30-1:00 p.m.

**Christ Evangelical Lutheran Church**

409 11th Street, Beaver Falls

**Serves** Mondays at 4:00 p.m.

**Church in the Round**

Griffith & Woodrow, Aliquippa

**Tues, Wed, Thurs 12:00-1:30 p.m.**

**First Lutheran Church**

4th Ave & 16th St, Beaver Falls

**Serves** Mondays 4:00-5:00 p.m.

**First Presbyterian Church**

1103 8th Avenue, Beaver Falls **Serves** Wednesdays 4:00-5:00 p.m.

**House of Prayer (Manna)**

2100 Irwin Street, Aliquippa

**Serves** Tuesdays 5:30pm-6:30pm

**The Salvation Army - Beaver Falls**

414 16th Street, Beaver Falls

**Serves** Sundays 4:00-5:00 p.m.

**The Ladle**

9th and Maplewood, Ambbridge

**Serves** Mondays 5:30-6:30 p.m.

### Beaver Falls Breakfast Ministry

**Central United Methodist Church** (1st Saturday of the month)

6th Avenue and 13th Street, Beaver Falls

724-846-3474

**Calvary United Presbyterian Church** (2nd and 5th Saturdays)

6th Avenue and 11th Street, Beaver Falls

724-843-6790

**First Christian Church** (3rd Saturday)

1401 Sixth Avenue, Beaver Falls

724-843-2470

**First Baptist Church** (4th Saturday)

6th Avenue and 17th Street, Beaver Falls

724-843-8930

## The Child and Adult Care Food Program (CACFP)

**What is it?** CACFP reimburses licensed childcare centers, family daycare homes, homeless shelters, after-school programs and adult day care centers for food provided to eligible children and adults, including snacks and/or meals.

**How can I find out more?** Call PA Department of Education at 1-800-331-0129 or contact programs directly to see if they offer this program.

- **Center for Hope** 724-251-4899  
740 Park Road, Ambbridge. Open 3rd Wed & Thurs. Wednesday hours 10-12, 1-3, 5:30-7:30. Thursday hours 10-12, 1-3. Serves zip code 15003.
- **Baden United Methodist Church/We Care Food Pantry** 724-689-2720  
420 Dippold Ave, Baden  
Open 3rd Mondays and 3rd Tuesdays from 5:30-8:00 p.m.  
Serves zip code 15005.
- **Christian House Baptist Chapel** 724-495-3330  
814 State Route 18, Racoon Township. Open 1st Saturday of the month from 9:00 a.m. to 12:00 p.m. Serves zip codes 15043, 15050, and 15077 plus Greene, Hanover, Independence, Potter, and Racoon Townships.
- **Darlington Food Pantry** 724-630-8206  
First United Presbyterian Church of Darlington. 3385 Old Darlington Rd, Darlington. 3rd Fri and Sat, 12:00-2:00 p.m. Serves 16115, South Beaver, Enon Valley, New Galilee, and Chippewa.
- **Drug and Alcohol Services of Beaver Valley Inc. Food Pantry** 724-728-8220  
697 State Street, Beaver.
- **Greater Faith Family Worship Center (Industry)** 724-643-0603  
Hanover Presbyterian Church  
2462 State Route 18, Clinton. Open 2nd Mondays. Serves Hanover School District.
- **Marion Township Borough Building** 724-452-1986  
485 Hartzell School Road, Fombell. Every 4th Thursday of the month 10am-12pm. Serves zip code 16123 (Marion Twp).
- **New Life Presbyterian Church** (located in Hopewell Township) 724-378-4389
- **St. Frances Cabrini** 724-775-6363  
115 Trinity Dr, Aliquippa. Open 3rd Thursdays from 6:00-7:00 p.m. Serves Centre Township.
- **The Salvation Army - Aliquippa** 724-378-0875  
514 Franklin Avenue, Aliquippa. Open Tuesdays from 11:00 a.m. to 1:00 p.m. Serves zip codes 15001 and 15061.
- **The Salvation Army - Beaver Falls** 724-691-3605  
721 13th Street, Beaver Falls. Open Mon-Fri, 9:00 a.m. to 11:30 a.m. and 12:30 p.m. to 2:30 p.m. Serves zip codes 15010, 15066, and 16136.
- **The Salvation Army Service Unit Midland, Reegan Hall** 724-643-2690  
Third Thurs. 12pm–2pm (zip codes 15052 and 15059)
- **Salvation Army Rochester** 724-774-8335  
378 Jefferson St, Rochester.  
Every Tuesday and Thursday from 9 a.m. to 12 p.m. Serves zip codes 15009, 15027, 15042, and 15074.  
Breadline every Friday 11:00-12:00  
No need to register in advance for the Breadline.

If you are not sure which food pantry serves your area, call The Salvation Army Beaver Falls for more information at 724-846-2330.